

BOOKCASE

CONDITIONS OF USE AND MAINTENANCE OF FURNITURE

Product for domestic use only.
 Avoid placing the furniture near sources of heat, damp, or strong sunlight.
 Do not clean with abrasive products or cleaning products with solvents.
 Use a dust remover before any cleaning process.
 It is recommended to use a damp, lint-free clean cloth.

CUSTOMER SUPPORT

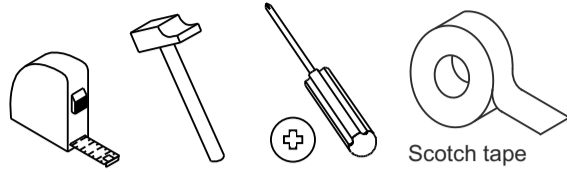
(+34)964 321 111

8am-1pm 3pm-5:30pm Monday to Friday

www.mueblespitarch.com
comercial@mueblespitarch.com

Pitarch
 SYSTEM KIT MUEBLES

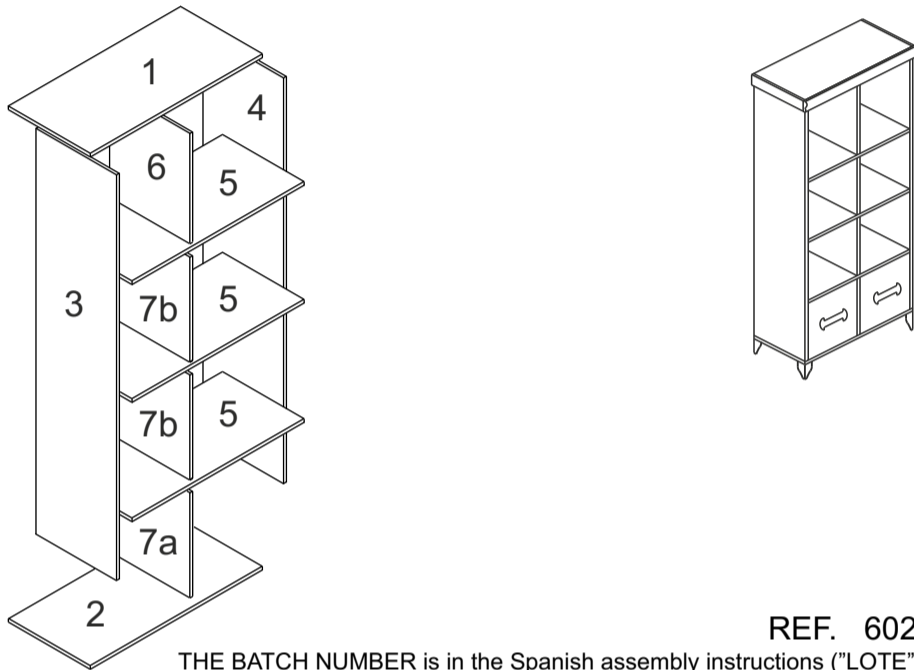
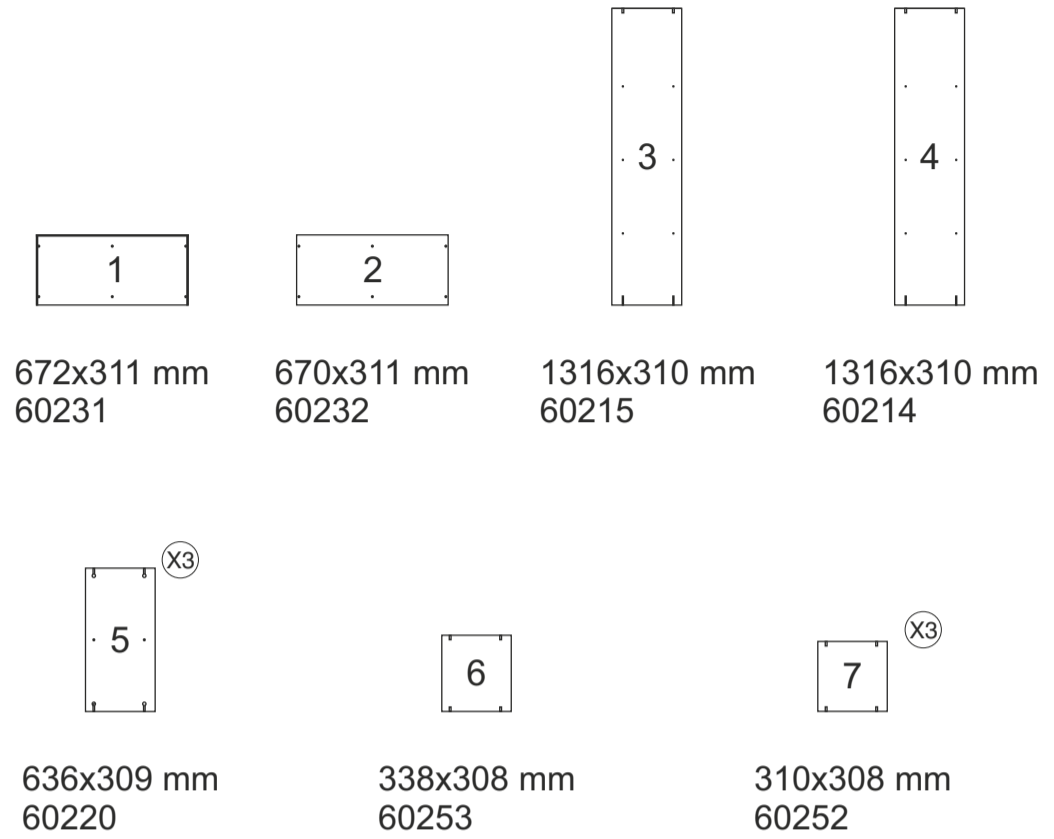
Tools required:



Fittings included:

Col x 2 Nº721060 	Exc x 12 Nº721016/721017 	Tap x 8 Nº721308 	Aut x 4 Nº721002
Pat x 4 Nº710158 	Lz x 1 Nº721034 	Tam x 6 Nº721508 	Rei x 16 Nº721020
Moldgr x 1 Nº710167 	Moldpq x 2 Nº710160 	Cesta x 2 Nº710176 	

The pieces you will find in the kit:



THE BATCH NUMBER is in the Spanish assembly instructions ("LOTE")

We advise you:

Order and count the parts and fittings

Enable an area for assembling.

Do not force the screws or assembly parts

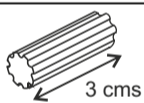
Follow the assembly instructions step by step

1

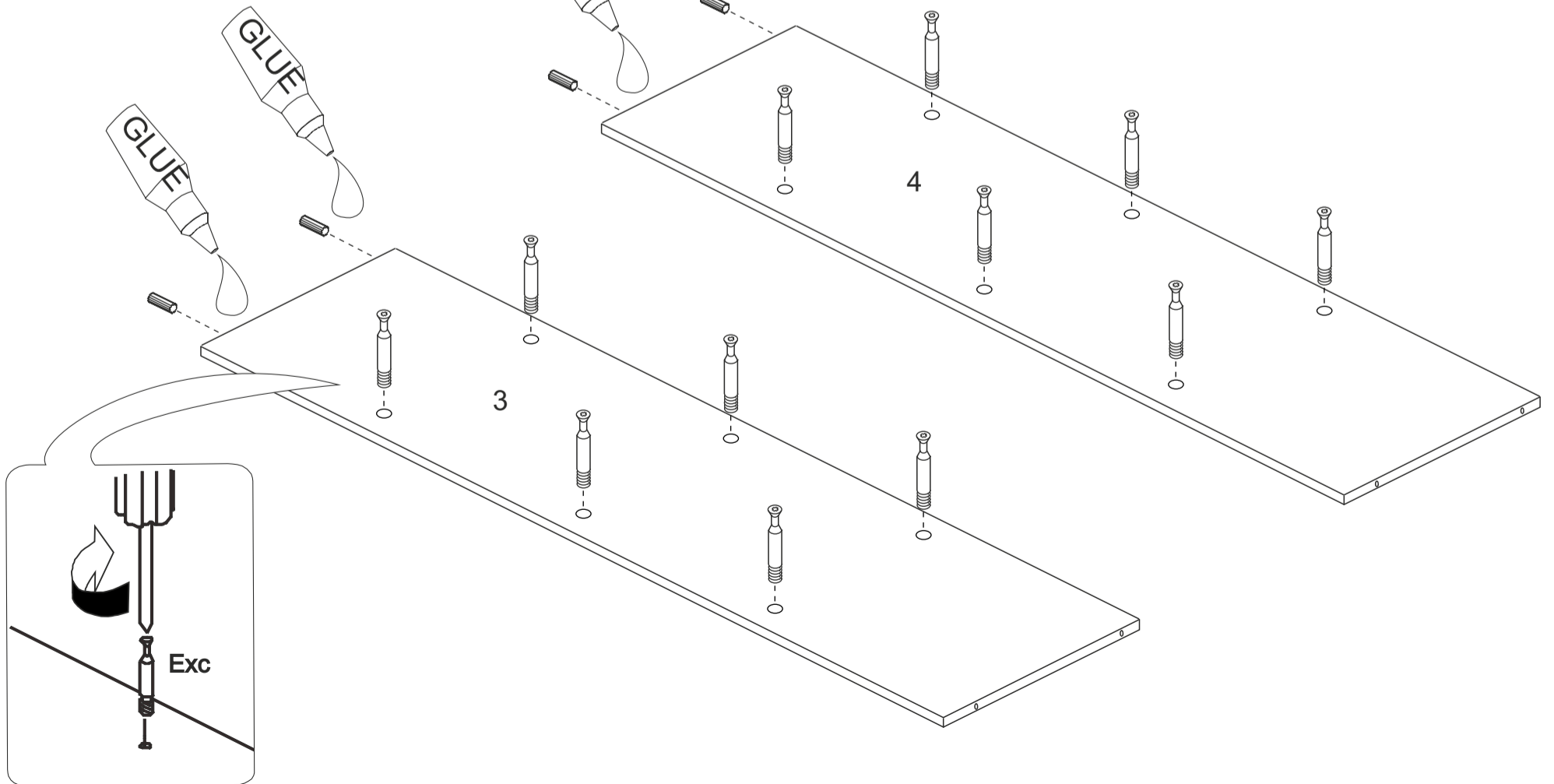
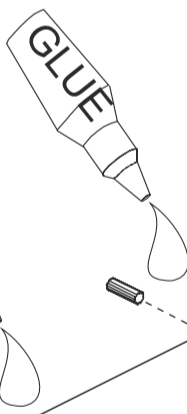
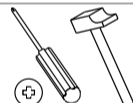
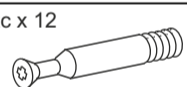
Col x 2



Tap x 4

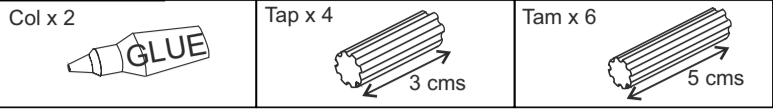


Exc x 12

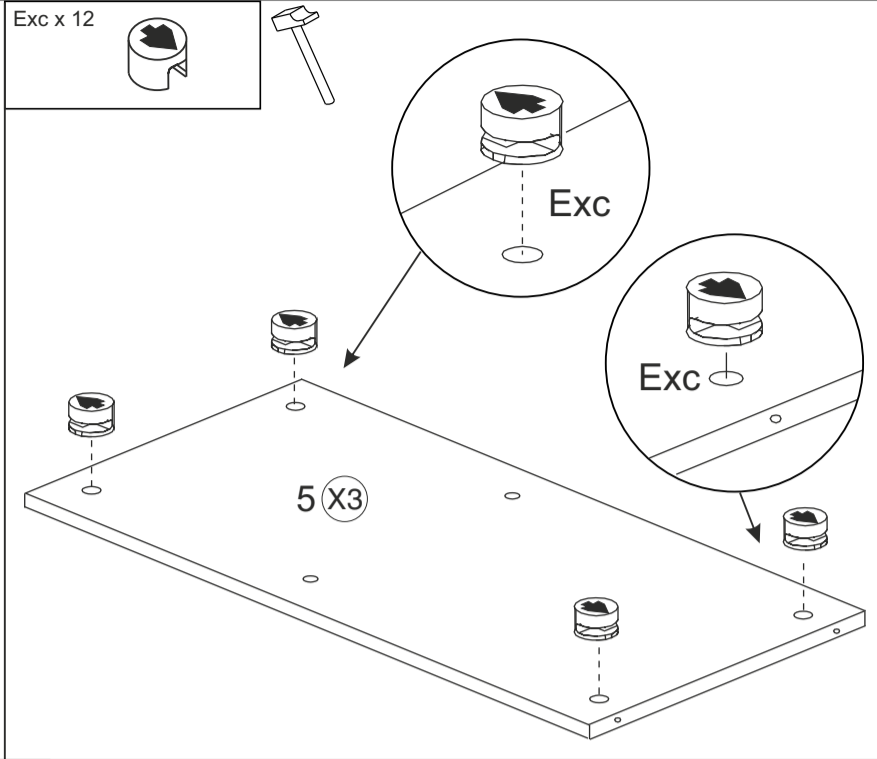
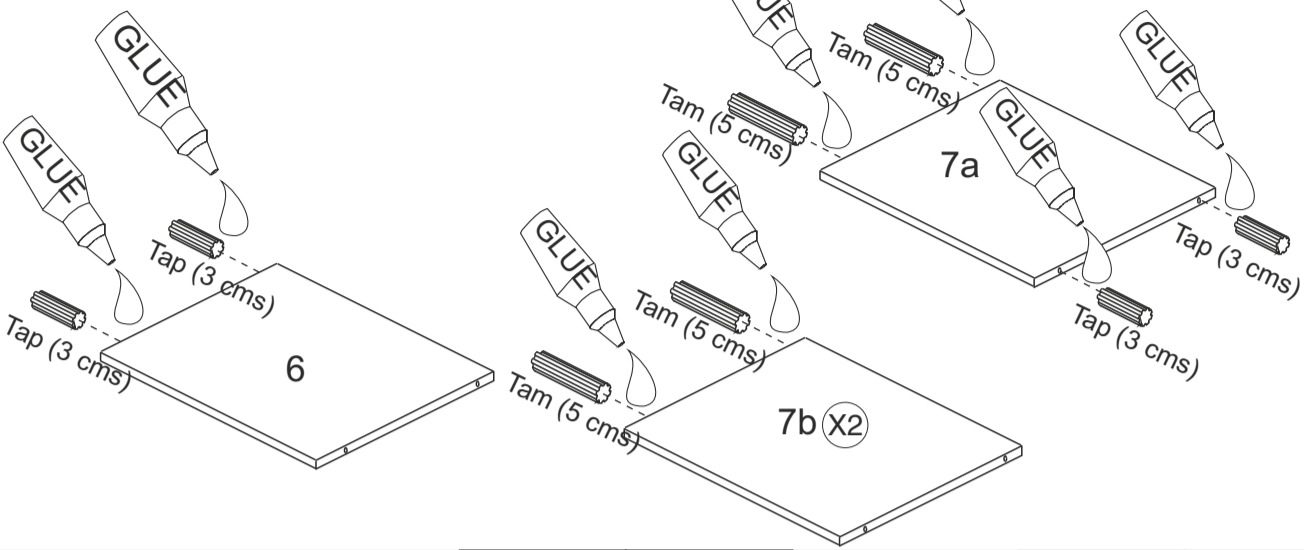


1

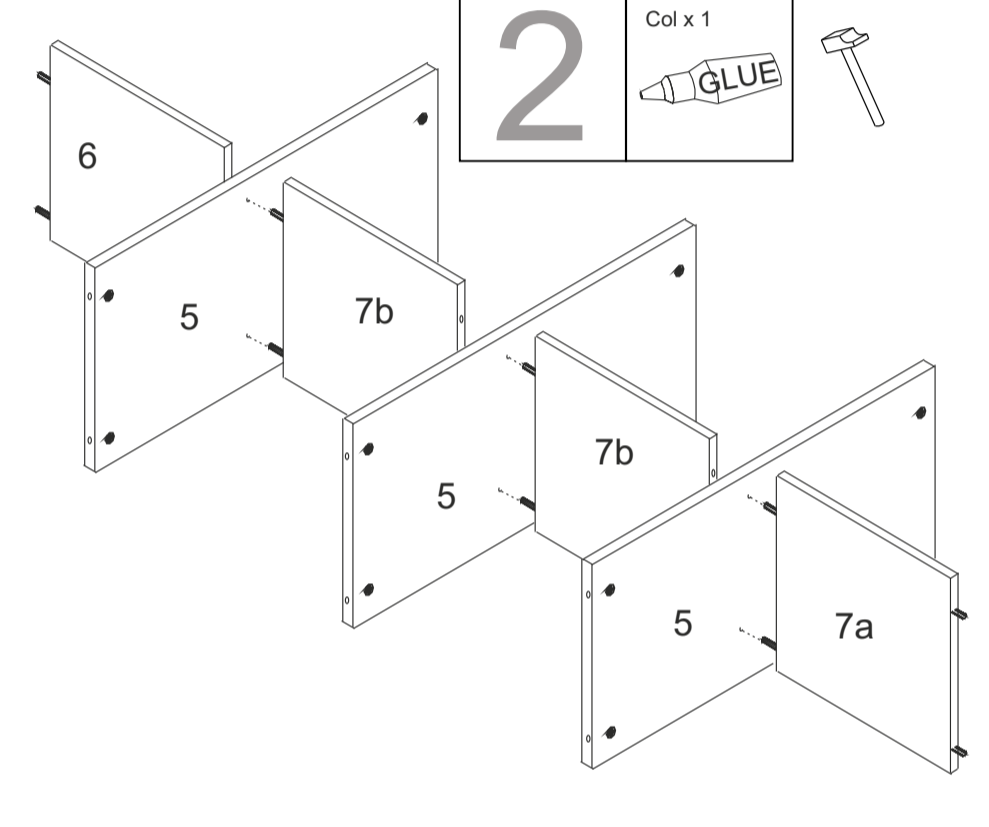
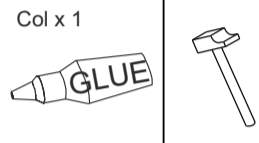
El primer paso es el montaje de los herrajes



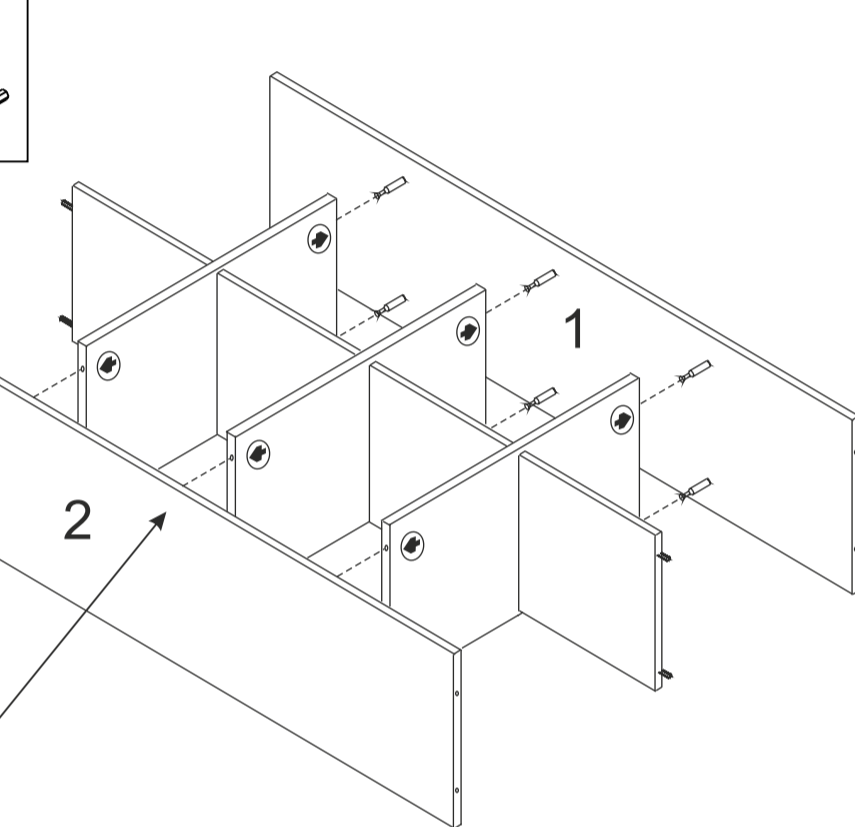
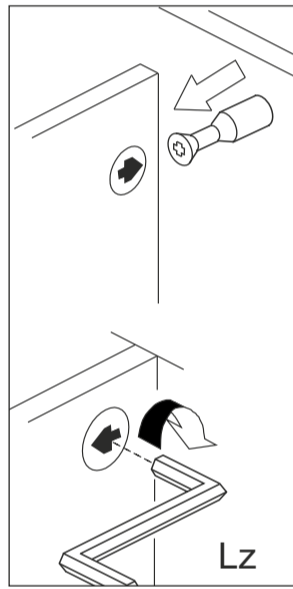
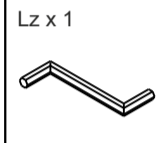
Los mechones "Tap" se utilizan para el ensamblado tanto del techo como del suelo.



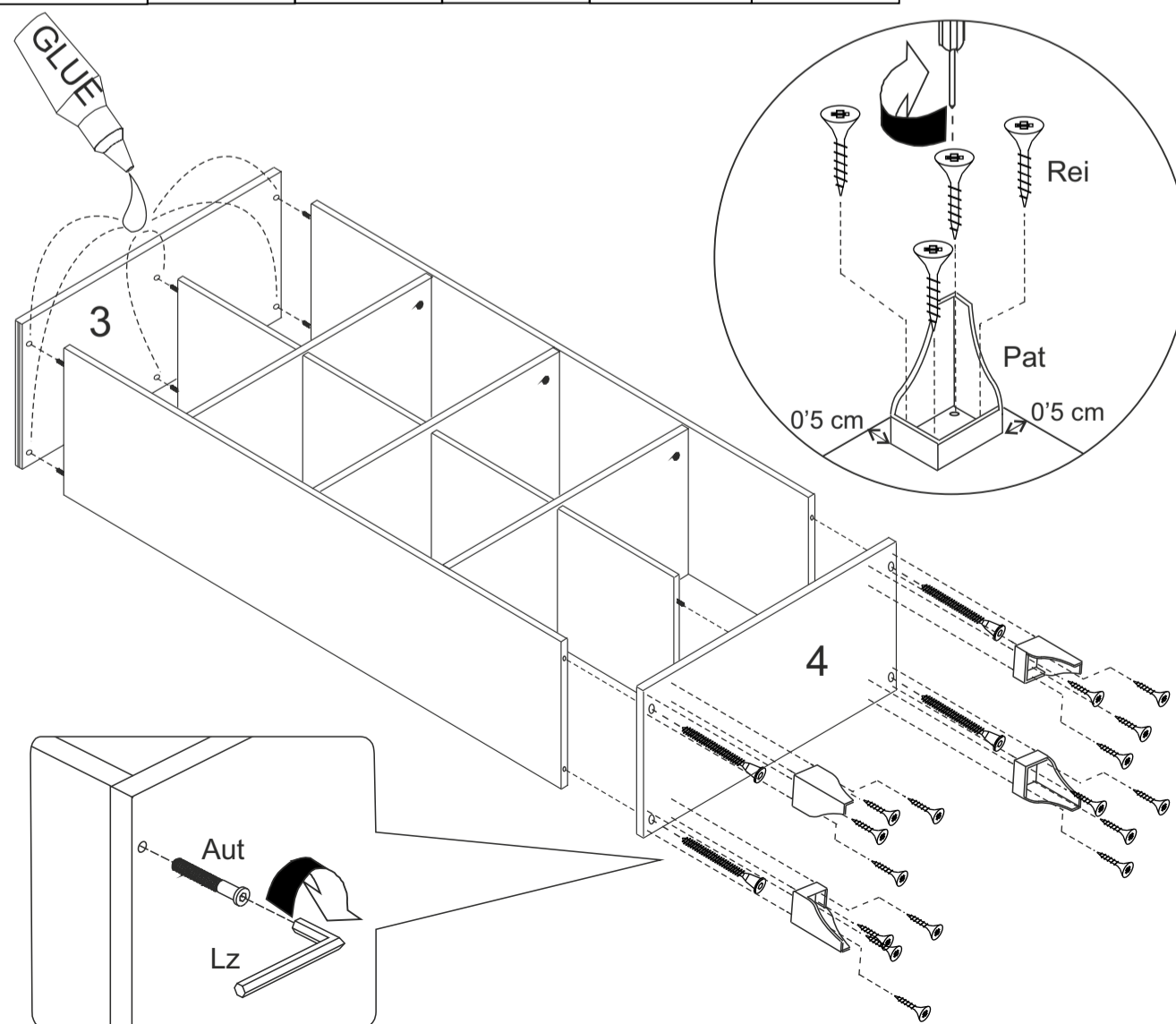
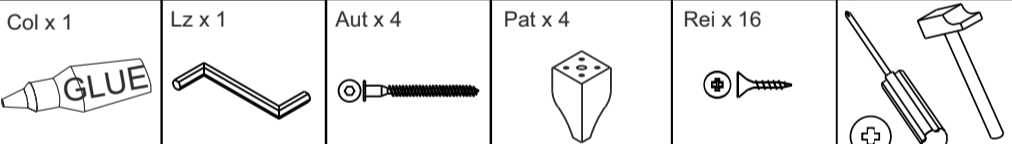
2



3



3



4

